

A close-up photograph of a bunch of green grapes, with some leaves visible in the background, set against a bright, slightly blurred green background.

SUSSEX™ INSECT GROWTH REGULATOR

Formulation: 70DF

Mealybugs and other key pests including leafhoppers, planthoppers, and scales don't stand a chance with Sussex™ Insect Growth Regulator. Why? Equivalent to Applaud®, Sussex™ inhibits chitin biosynthesis, suppresses oviposition of adults, and reduces the viability of eggs and is a perfect fit for resistance management spray programs. Trials and constant observation of the effectiveness of Sussex over a number of years in testing and in commercial use, has shown proven performance, flexible and reliable insect control, long residual protection and the product does not flare mites.

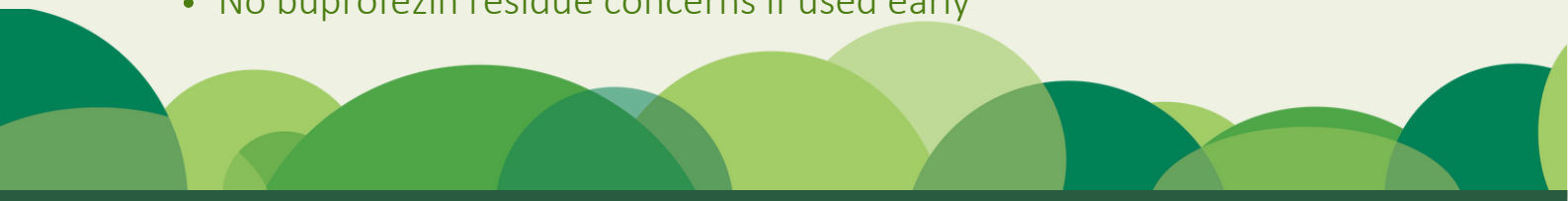
Sussex™ is effective against the nymphal stages of whiteflies, scales, mealybugs, and leafhoppers; Sussex is not an adulticide.

Key crops: coffee, grape, olive, Persimmon, pomegranate and tropical fruits.

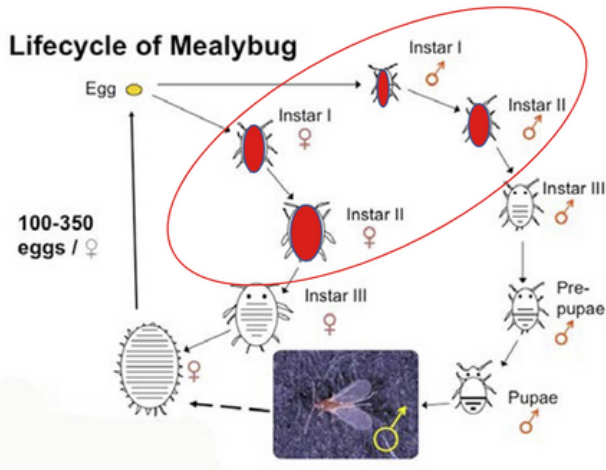
Vine Mealybug on grapes



Features

- Applied at budbreak or post-harvest effectively treats Leafhoppers, Lecanium Scale and mealybug
 - Early timing application reduces overwintering populations to more manageable in-season levels
 - No concern of phytotoxicity with Sussex
 - No buprofezin residue concerns if used early
- 
- A decorative footer consisting of several overlapping circles in various shades of green, ranging from light to dark.

Vine Mealybug Seasonal Development



- Overwinters in all developmental stages
- Development threshold temperature is 65F degrees
- 6-7 generations per year
 - 1st hatch (Bud break, early-March)
 - 2nd hatch (mid April)
 - 3rd hatch (mid-May)
- 4-7th generations, hatches overlap and move to basal leaves, canes, and clusters
- Mealybug applications typically do not start until Mid-April (2nd crawler hatch)

The Sussex™ Strategy:

Start your mealybug control program at “bud-break” to maximize effective budbreak application timing:

- Mealybugs overwinter at susceptible stages
- Crawlers are very susceptible to Sussex
- Mealybugs are exposed as they move to the buds to feed
- Treat the trunk, cordon, spurs/canes, clusters
- Sussex offers long residual activity
- Contact, residual, fuming action



Integrated Pest Management (IPM) Compatible

- Unique Mode of Action
- Excellent rotational partner
- No cross resistance with other IGRs
- Safe on honeybees when used according to label recommendations
- Soft on most natural enemies: lacewings, lady beetles, parasitoids, predatory mites and predatory thrips



To learn more about Sussex™ and our entire portfolio of specialized solutions, talk to your Sipcam Agro representative or visit www.sipcamagro.com. Always read and follow label directions.

Sipcam Agro USA, Inc.
2525 Meridian Parkway, Suite 100 | Durham, NC 27713 | sipcamagro.com | 800.295.0733

©2024 Sipcam Agro USA, Inc. Applaudé® is a registered trademark of Nichino America Inc.

